

An Evaluation of Microsoft's Windows® Vista™

Richard Awusi

Supervisor: John Ebdon

Consultants: Jill Japp and Billy Morgan

- 
- Linux is for nOObs!!



Presentation Outline

- Project overview
- Editions
- Vista Installation
- Features
- Tests Conducted
- Deployment
- Conclusions



Project overview

- New product
 - Released January 2007
- Experiment with Vista
 - Features
 - Performance
- Some comparisons with XP
- Deployment



Editions

- There are six
 - Vista Starter – sucks
 - Home Basic – sucks
 - Home Premium – step up from Home Basic
 - Business – networking features
 - Ultimate – the mother load
 - Vista Enterprise – volume licensers

Installation

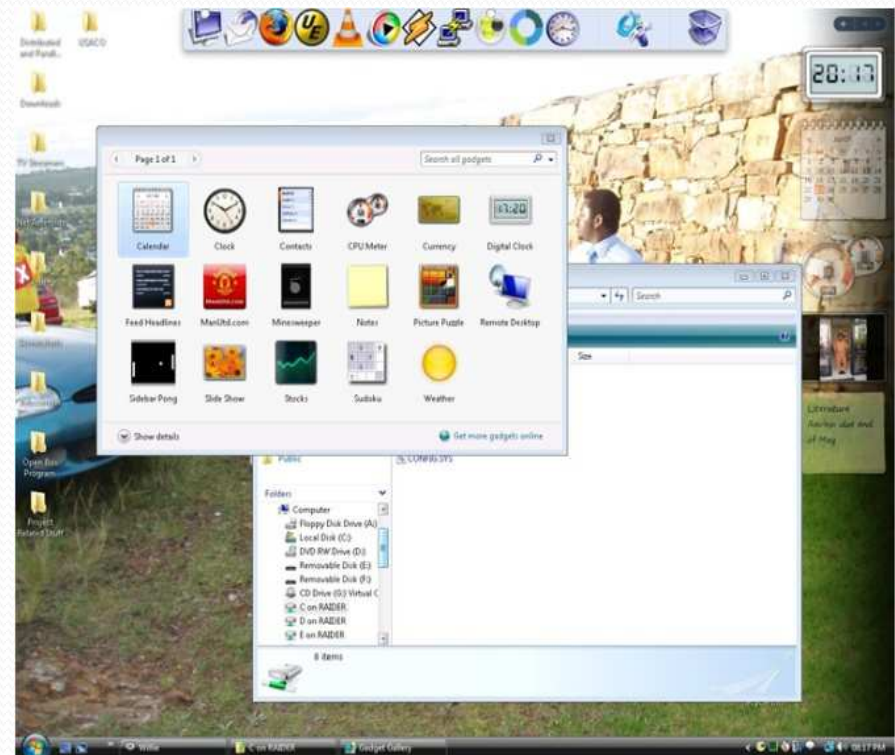
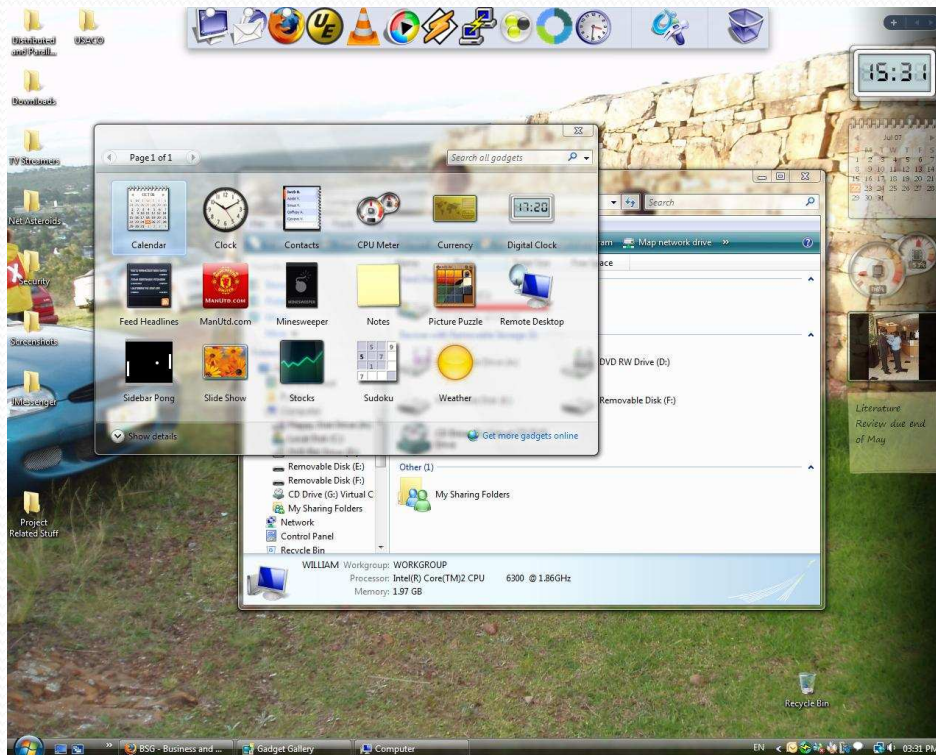
- Single install file
 - Windows Imaging (WIM) file
 - Single DVD / CDs
- 30 – 40 minutes
- Huge drivers database
 - Auto system configuration (WinSAT)
- Updates immediately after install

Features

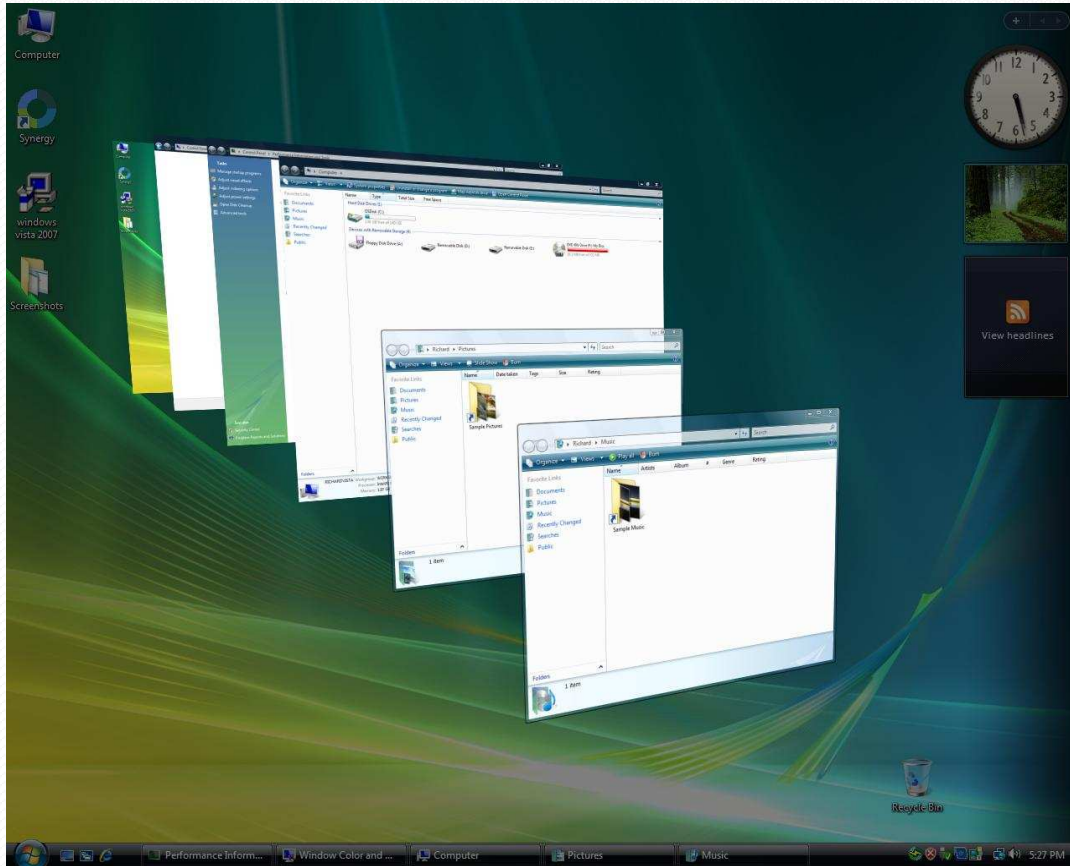
- ReadyBoost
 - Memory on a stick
 - Must meet speed requirements
 - 2.5 MB/s throughput for 4KB random reads
 - 1.5 MB/s throughput for 512KB random write
 - 256 MB – 4 GB total size
- SuperFetch
 - Programs in memory

Features (cont.)

- User Interface
 - AERO – absent from Starter and Home Basic



...more pretty pictures of AERO



Windows Flip 3D



Live thumbnails



Windows Flip



Features (cont.)

- User Account Control
 - Good idea
 - Elevation, even in admin mode
 - I find it an irritation
 - Disable: Run - secpol.msc\Local Policies\Security
- ShadowCopy
 - System Protection – restore points
 - Backups of files created

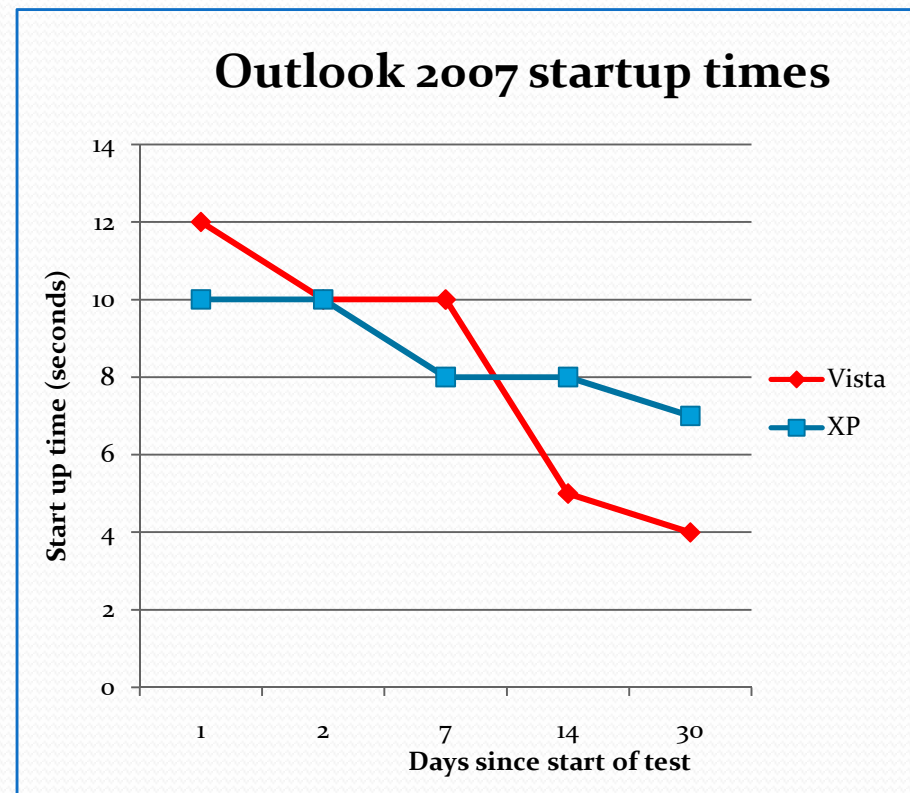
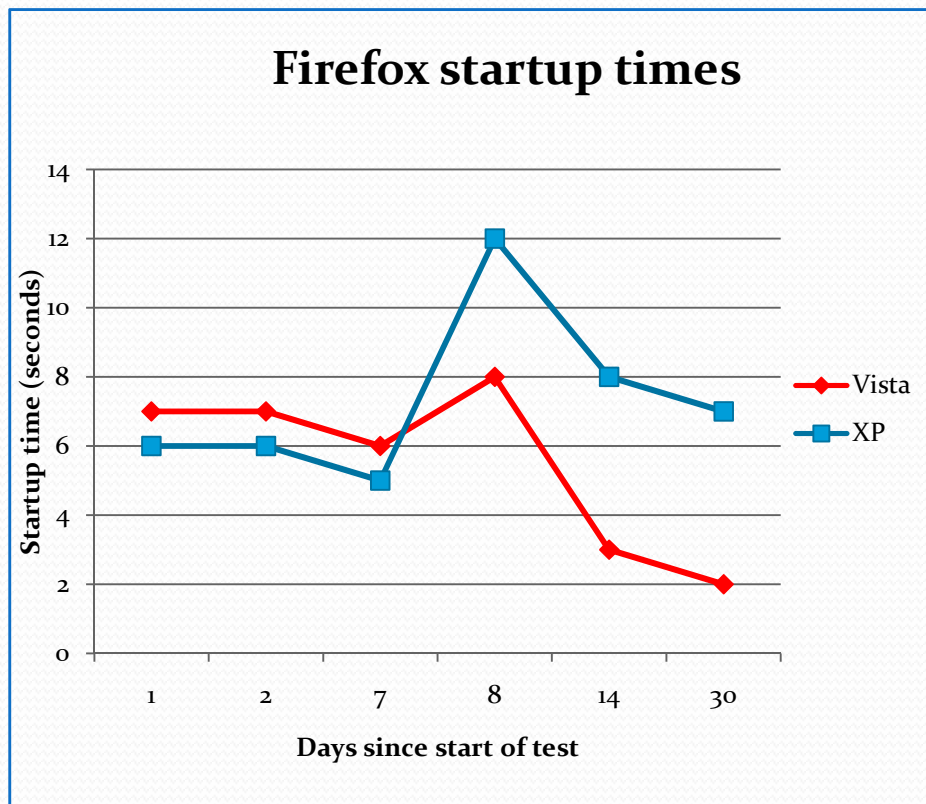


Performance enhancers

- Defragmentation
 - Automatic and manual
 - Runs once a week
- Searching
 - Index user documents
 - Instant search on index

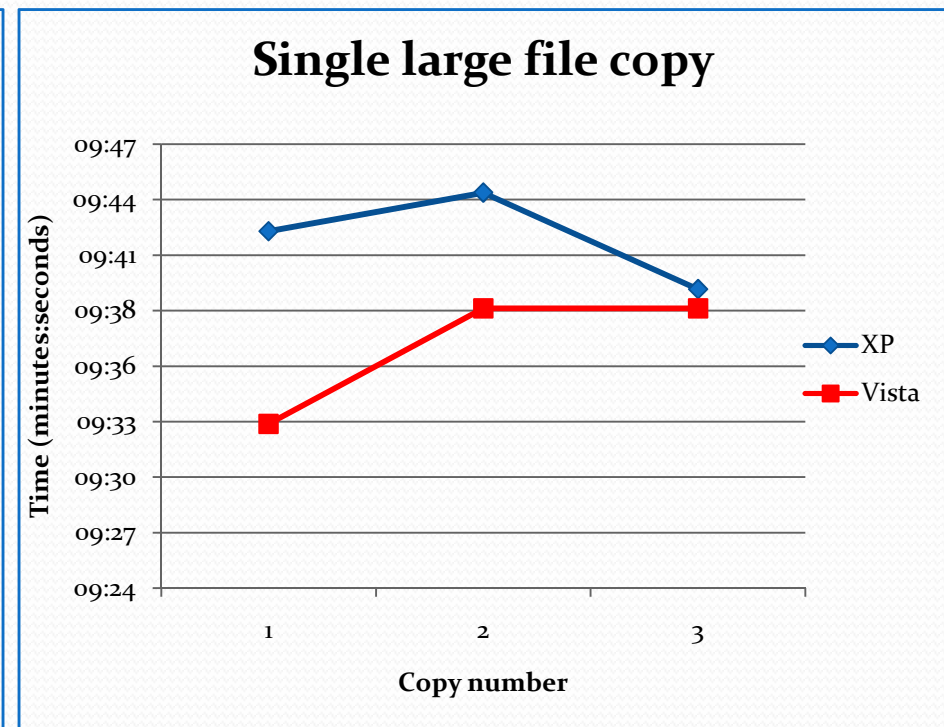
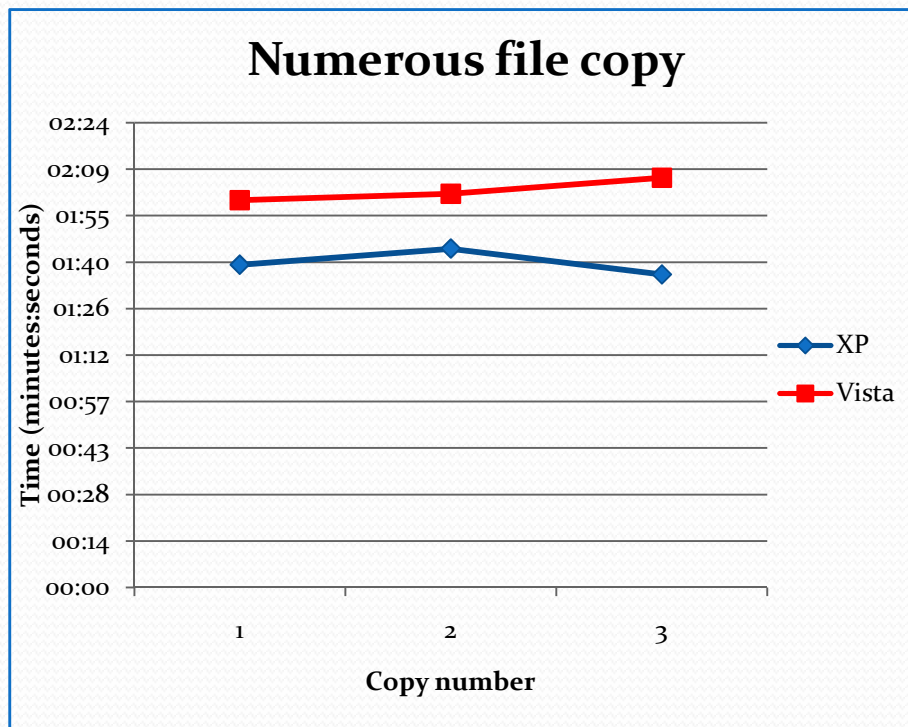
Tests

- SuperFetch
 - Firefox 2.0 and Outlook 2007 startup times



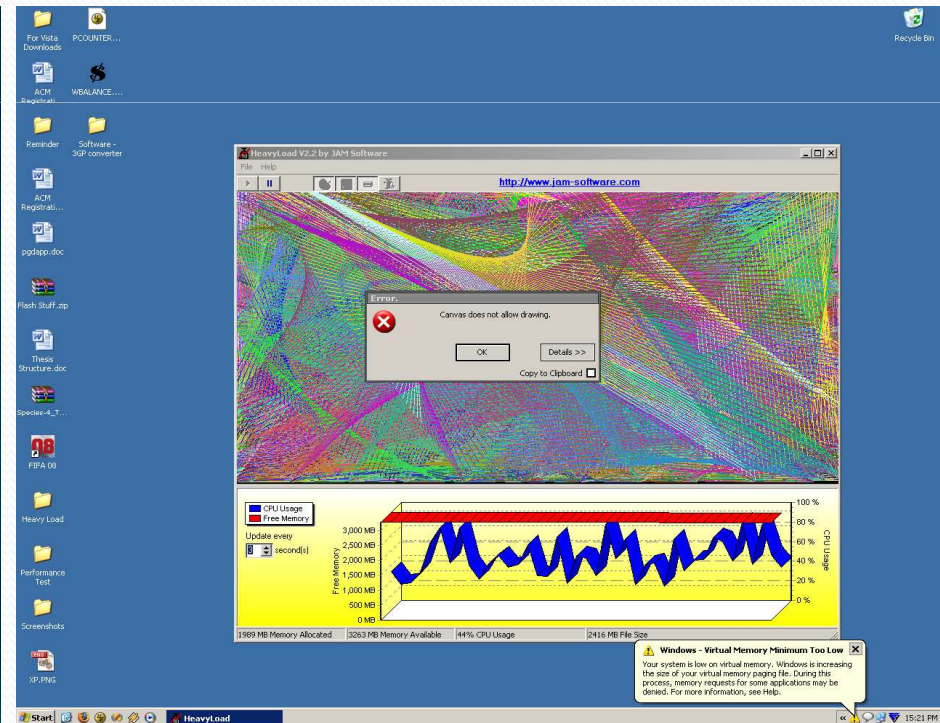
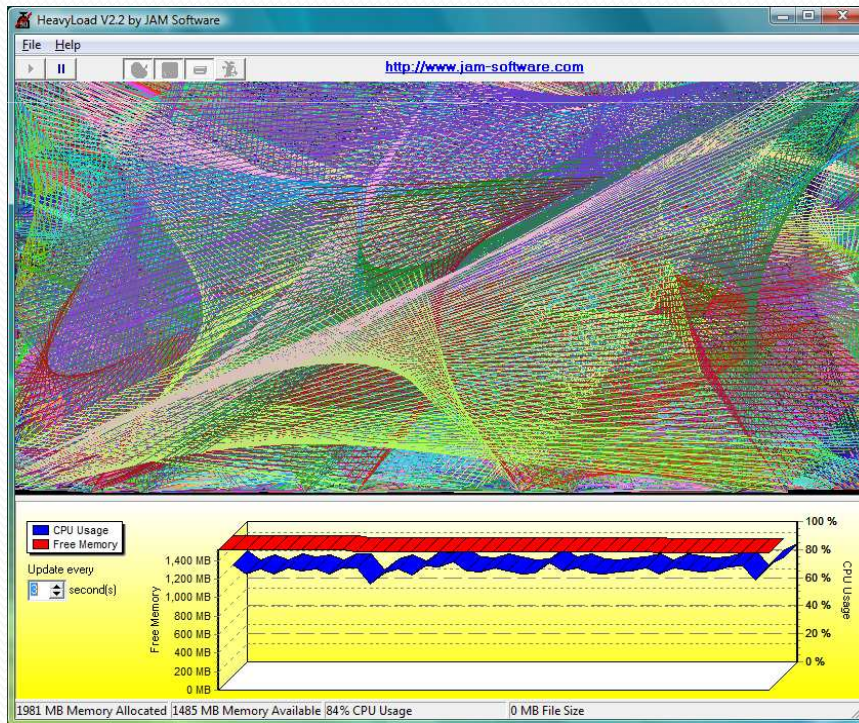
Tests (cont.)

- File copy test
 - Public network



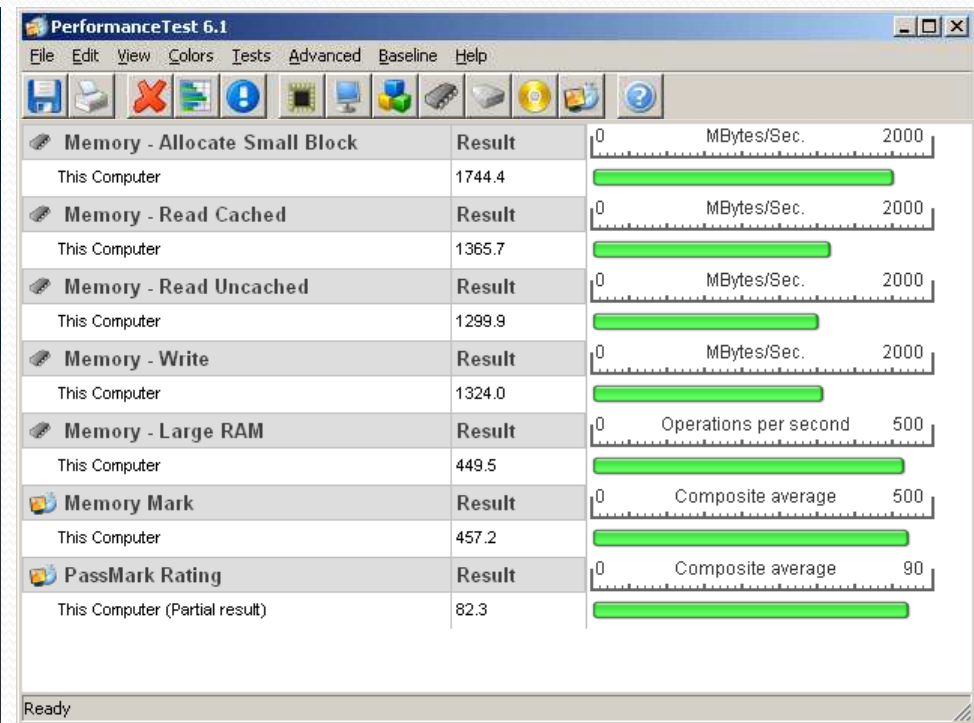
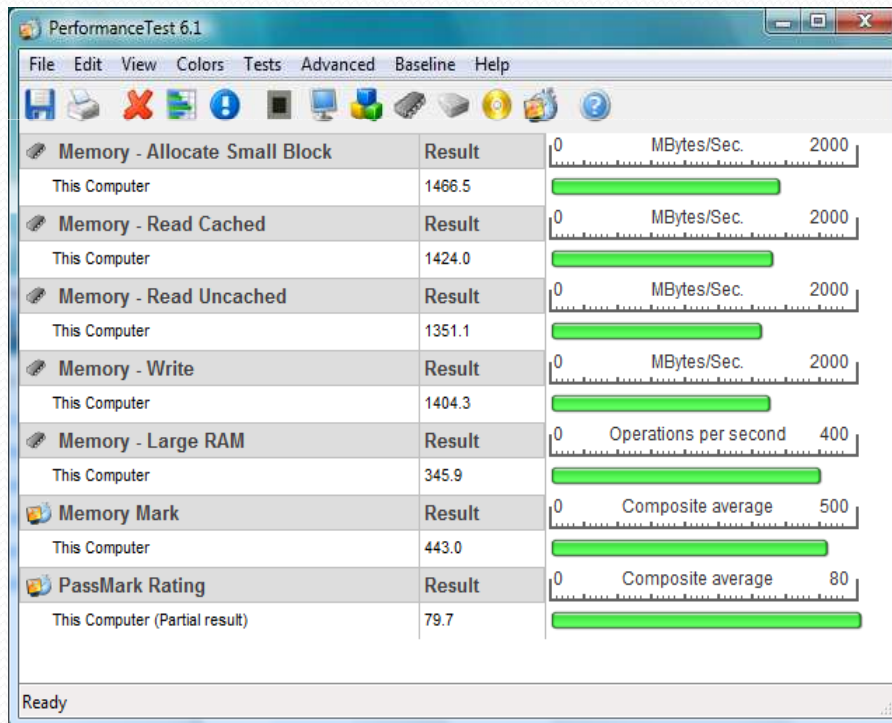
Tests (cont.)

- System strain
 - HeavyLoad



Tests (cont.)

- Memory tests
 - Performance test





Compatibility Tests

- Office 2003 and Office 2007
- Drivers
- Games
 - Unreal Tournament 2004
 - FIFA 08
 - Quake 3
 - Doom 3



Security

- User Account Control
- BitLocker Drive encryption
- IE less coupled with system
- Network Access Protection



Deployment

- GHOST
- ImageX

Deployment - GHOST

- Sector based application
- Initial deployment failed
- Machine setup
 - Boot manager changed
 - Boot.ini changed to Boot Configuration Data Editor (BCDEdit.exe)
 - Enter `bcdedit /set {bootmgr} device boot`
 - Enter `bcdedit /set {default} device boot`
 - Enter `bcdedit /set {default} osdevice boot`
- Successful deployment



Deployment - ImageX

- ImageX - File based application
- Two ways of deployment
 - Create Master Computer
 - Command-line image creation
 - Server based - BDD
 - GUI – image created on server
- Unable to auto-multicast



Conclusions – Pro's

- Vista is nice to work with
- SuperFetch awesome
- Great user interface
- Auto defrag. Great
- Range of editions for different users

- But...



Conclusions – Con's

- No real killer feature other than AERO
- AERO becomes obsolete after a while
- Some features could have been done better – UAC and instant search
- Too many editions – most powerful pricy
- Driver issues

Conclusion

- XP still does the job just fine



Possible extensions

- BitLocker Drive Encryption
- ImageX deployment on a large scale
- Server 2003 and Longhorn domain testing
- Network Access Protection
- Extensive system tests

Questions?

- ...bearing in mind Google will have lots more answers!